

Curative, for the protection of injured periodontal tissues

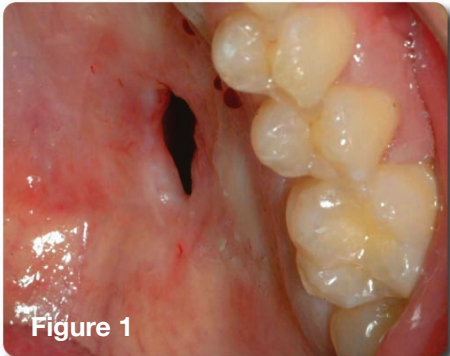


Figure 1

### Surgical Closure of a Large Palatal Fistula

**J. Jerome Smith, DDS**  
Lafayette, LA

A 30 year old male presented with an oral antral fistula (12 mm X 10 mm) in the mid-palate secondary from a motor vehicle accident 5 years previous (Figure 1). Soon after the accident, another practitioner's attempt to close the fistula failed. Since that time, the patient had been fitted for an obturator.

Under conscious sedation and local anesthesia, the palatal soft tissue was excised from third molar to third molar area and reflected posteriorly. The circumferential margins of the fistula orifice were de-epithelialized and closed together with 5/0 Ethicon sutures (Figure 2). A resorbable collagen membrane was placed and secured over the bony defect along with several platelet rich fibrin membranes prior to closure of the semi-circumferential palatal incision.

An impression was made immediately after surgical wound closure to fabricate an appliance complete with reservoir for application of Curative directly over the surgical site (Figure 3).

Post operative instructions included wearing the appliance 24 hours and dispensing Curative in the appliance reservoir t.i.d.

At three days post-op recall (Figure 4), the sutured fistula as well as the palatal incision showed remarkable healing and appeared to be in an advanced state of healing characteristically seen at 7 to 8 days post-op.

The patient continued to wear the appliance on an ongoing basis and used Curative as instructed for three weeks post-op (Figure 5). Examination indicated that the integrity of the incision was sound and healing continued to show remarkable results. The patient required minimal post-op analgesia and the fistula closure was a complete success (Figure 6).

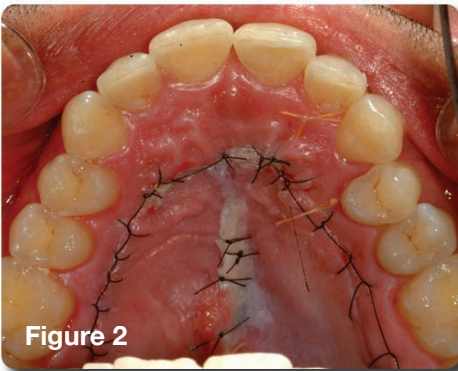


Figure 2

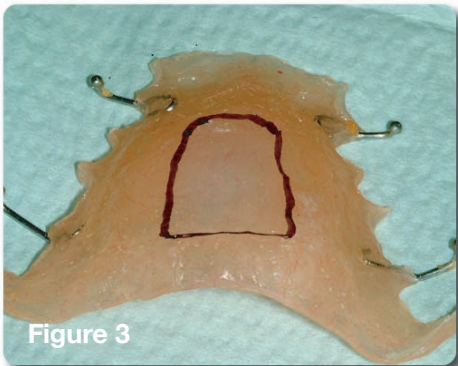


Figure 3

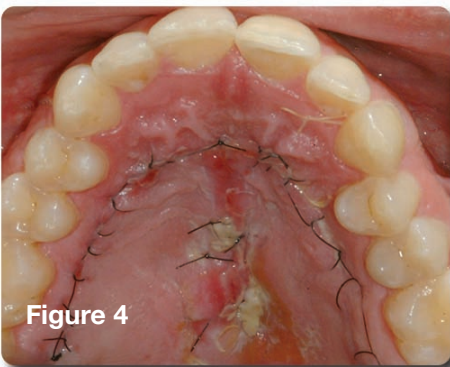


Figure 4

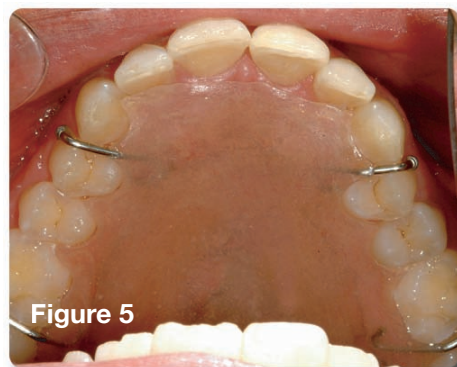


Figure 5

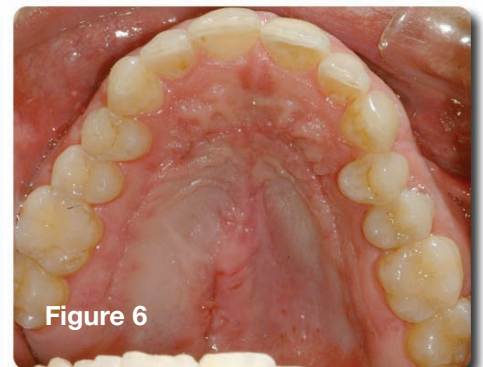


Figure 6

[www.oroscience.com](http://www.oroscience.com)

For more information about OroScience products and technologies, please email [info@oroscience.com](mailto:info@oroscience.com) or call 1.650.856.9600 or toll free 1.866.921.9603

MKT001-02.CUR.A



**Curative™ is a periodontal wound dressing intended to act as a temporary physical barrier, provide moisture and lubrication, and assist the natural process of wound healing for wounds and/or inflamed mucosal tissues of the maxillary (upper) and mandibular (lower) dental arches.**

Curative helps the clinician manage oral wounds by providing a barrier to assist in the process of acute and chronic wound healing. Clinical and animal studies demonstrate that Curative protects and safely promotes the healing of post-operative surgical wounds.



Curative is a prescription product that is packaged as a wound dressing kit consisting of a pressurized canister containing 30 mL (1 US ounce) of emulsion and 30 disposable dental trays. The Curative emulsion is dispensed into the disposable dental tray and placed over the dental arch three times daily to manage acute and chronic wounds. One Curative Kit is used at-home by the patient over a 7 to 10 day period or as prescribed by the oral care practitioner.

#### **Curative Emulsion Ingredients**

Curative contains perfluorodecalin, purified water, glycerin, hydrogenated phosphatidylcholine, cetearyl alcohol, polysorbate 60, tocopheryl acetate, benzyl alcohol, methylparaben, propylparaben, & oxygen.

#### **Directions and Indications for Use**

See Directions for Use for full discussion of indications, directions, contraindications, and warnings.



[www.oroscience.com](http://www.oroscience.com)

For more information about OroScience products and technologies, please email [info@oroscience.com](mailto:info@oroscience.com) or call 1.650.856.9600 or toll free 1.866.921.9603

MKT001-02.CUR.A