

## Curative, for the protection of injured periodontal tissues

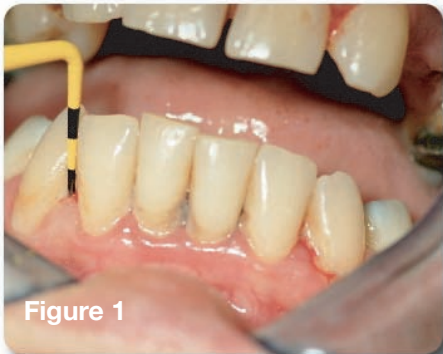


Figure 1



Figure 2



Figure 3



Figure 4

### Minimally Invasive Therapy of Early Periodontitis

**Dr Curtis H Roy and Associates**  
**Hygiene Department**  
**Lafayette, LA**

After not seeking dental care for over 6 years a healthy 37 year old female presented with poor oral hygiene. Examination of the remaining lower teeth (22-27) revealed heavy plaque and calculus, generalized marginal and papillary gingivitis, and bleeding upon probing. Her gingival tissue had an irregular contour with rolled raised margins and puffy papilla. Pocket depths ranged from 2 to 4 mm (Figure 1), with distal of 22 measuring 4 mm (Figure 2). Patient was diagnosed with early periodontitis.

Therapy consisted of oral hygiene instruction (OHI), scaling and root planing (SRP) with manual and ultrasonic instruments, and Curative for home care (Figure 3).

Curative was applied to the lower teeth using the disposable tray included in the Curative kit. The patient was instructed to leave the tray in place for 30 minutes and to repeat the application two additional times that day. She was also instructed not to brush and to use only cool liquids for the first day. She was further instructed to gently brush before applying Curative three times daily for 30 minutes for the following 6 days.

Patient returned 8 days later, after a total of 7 days of Curative therapy. The gingival tissue appeared pink and healthy with a normal contour. Pocket depths ranged from 1- 2 mm, with distal of 22 measuring 1½ mm (Figure 4).

Clinician was impressed with the rapid reduction of inflammation and swelling, pocket reduction, and restoration to a normal gingival contour.

[www.oro-science.com](http://www.oro-science.com)

For more information about OroScience products and technologies, please email [info@oro-science.com](mailto:info@oro-science.com) or call 1.650.856.9600 or toll free 1.866.921.9603

MKT001-05.CUR.A



**Curative™ is a periodontal wound dressing intended to act as a temporary physical barrier, provide moisture and lubrication, and assist the natural process of wound healing for wounds and/or inflamed mucosal tissues of the maxillary (upper) and mandibular (lower) dental arches.**

Curative helps the clinician manage oral wounds by providing a barrier to assist in the process of acute and chronic wound healing. Clinical and animal studies demonstrate that Curative protects and safely promotes the healing of post-operative surgical wounds.



Curative is a prescription product that is packaged as a wound dressing kit consisting of a pressurized canister containing 30 mL (1 US ounce) of emulsion and 30 disposable dental trays. The Curative emulsion is dispensed into the disposable dental tray and placed over the dental arch three times daily to manage acute and chronic wounds. One Curative Kit is used at-home by the patient over a 7 to 10 day period or as prescribed by the oral care practitioner.

#### **Curative Emulsion Ingredients**

Curative contains perfluorodecalin, purified water, glycerin, hydrogenated phosphatidylcholine, cetaryl alcohol, polysorbate 60, tocopheryl acetate, benzyl alcohol, methylparaben, propylparaben, & oxygen.

#### **Directions and Indications for Use**

See Directions for Use for full discussion of indications, directions, contraindications, and warnings.



[www.oroscience.com](http://www.oroscience.com)

For more information about OroScience products and technologies, please email [info@oroscience.com](mailto:info@oroscience.com) or call 1.650.856.9600 or toll free 1.866.921.9603

MKT001-05.CUR.A